

CIVILS AND INFRASTRUCTURE



winvic

CONTENTS

WHO WE ARE

- 03 Our Service
- 04 Key Facts
- 05 Where We Operate
- 06 What We Do

WHAT WE DO

- 07 Site Wide Infrastructure Works
- 09 Rail
- 11 Highways
- 13 Structures
- 15 Frameworks

THE WINVIC WAY

- 17 Investing in the Future
- 18 Creating a Sustainable Future
- 19 Supporting Communities Through Construction
- 20 Doing It Right
- 21 Funds - Clients - Consultants
- 22 Awards and Accreditations
- 23 Civils and Infrastructure Team



Rob Cook

Managing Director - Civils and Infrastructure

“EXPERIENCE ACROSS A WIDE RANGE OF SECTORS GIVES US ALL-IMPORTANT INSIGHT INTO THE CHALLENGES EACH ONE FACES.”

I OUR SERVICE

Winvic is a privately owned main contractor that specialises in the design and delivery of large-scale civils and infrastructure schemes and is recognised as the UK's top industrial 'shed' specialist. We have built an impressive register of repeat clients and end users, which also extends into the multi-room sector, where we deliver turnkey student accommodation and build-to-rent schemes.

Within the Civils and Infrastructure (C&I) sector of our business we offer pre-construction, planning, design and delivery services. We deliver site-wide infrastructure schemes, to enable industrial, commercial and housing developments, rail projects – including Strategic Rail Freight Interchanges (SRFIs) – and bridging and tunnel structures. Our team also has extensive experience of complex highways projects, including bypass creation, roundabout construction and reconfiguring motorway junctions. Our knowledge of BIM Level 2 digital design reduces delivery times, wastage and costs and we are specialists in the delivery of projects that are Net Zero in construction.

Furthermore, our excellent relationships with infrastructure owners and operators including National Highways, government agencies and local authorities encompass long-term framework contracts to deliver new infrastructure assets and infrastructure improvements across highways and structures.



KEY FACTS AND FIGURES

Since 2021, Winvic has moved 10 million m³ of material across its Civils and Infrastructure projects. Nevertheless, we have been delivering civils and infrastructure works for over 20 years as part of our very first projects, since 2001. Our first standalone project in Civils and Infrastructure was Rugby Gateway in 2013.

In more recent years our Civils and Infrastructure department has grown and flourished, delivering 100km of highways works and securing a place on three public sector frameworks. We have been awarded four government approved Nationally Significant Infrastructure Projects (NSIPs) – comprising three Strategic Rail Freight Interchanges (SRFIs) – and have constructed ten bridge structures to carry rail, road and pedestrian traffic.



3

Strategic Rail Freight Interchanges (SRFI)

4

Nationally Significant Infrastructure Projects (NSIP)

10

bridge structures, carrying rail and road traffic

Over 125km

of highways constructed and maintained

10 million m³

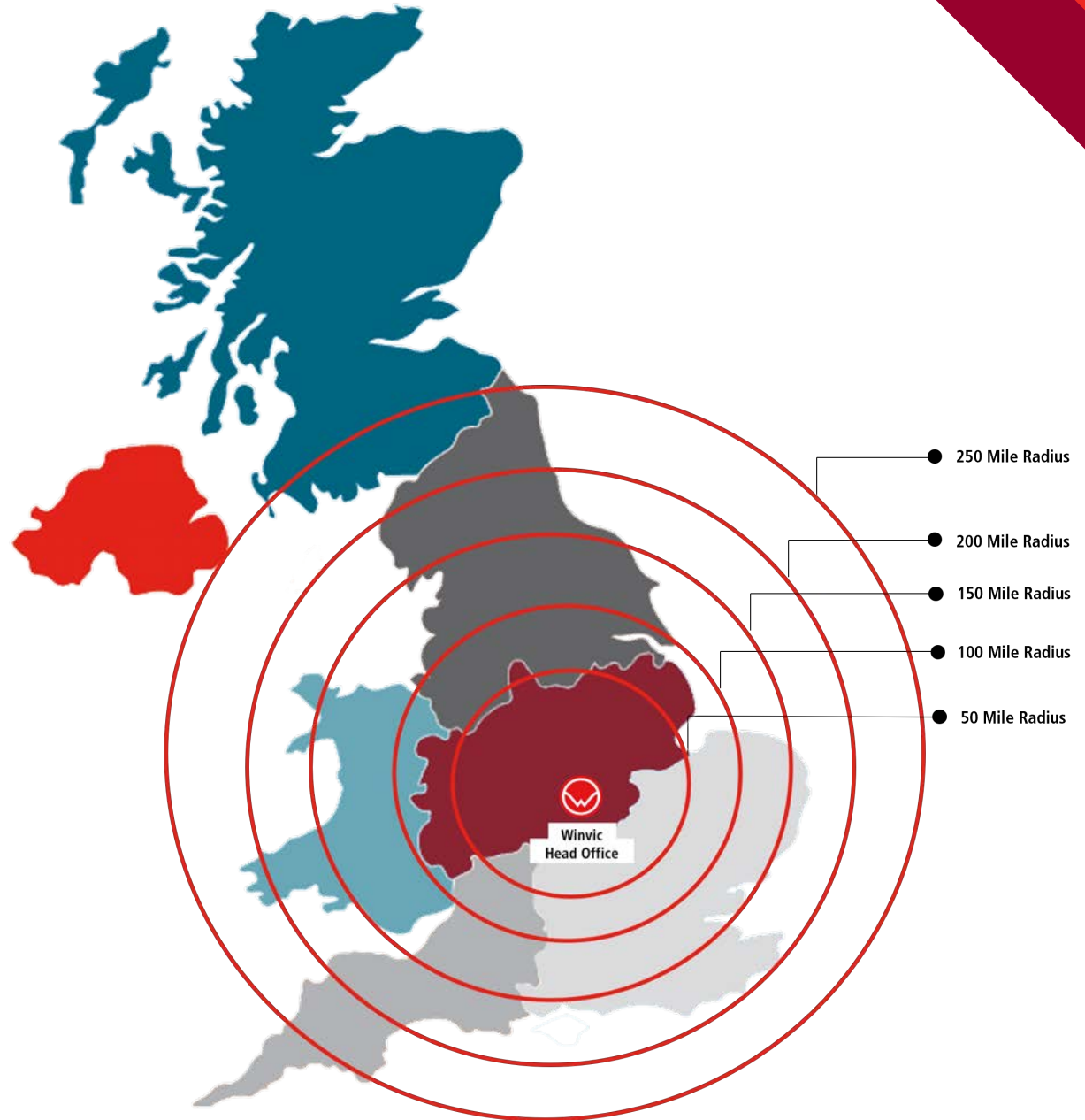
of material moved

47

C&I projects

WHERE WE OPERATE

Winvic has come a long way since completing its first Civils and Infrastructure project at Brackmills, Northampton in 2002. The majority of our projects are located within a 200-mile radius of our head office in Northampton, but as a main contractor accustomed to thriving we are equipped to deliver civils and infrastructure schemes anywhere in the UK.



RUGBY GATEWAY WAS OUR FIRST STAND ALONE C&I PROJECT.

WHAT WE DO



SITEWIDE INFRASTRUCTURE WORKS

From ground remediation and earthmoving to drainage and utilities, we have the experience to prepare a site, of any size – for development.



STRUCTURES

We design, construct and repair bridging and tunnel structures, whether they carry railway tracks, highways or bridleways.



HIGHWAYS

We undertake works to highways of all classes – including Section agreements, private roads, trunk roads, motorway junctions and roundabouts, being commended by National Highways and local authorities.



FRAMEWORKS

With places secured on national and county highways frameworks, we are equipped to balance the core priorities of safety, customer and delivery.



RAIL

Leading the delivery of Strategic Rail Freight Interchanges in the UK, our expertise covers track construction, reinforced concrete slabs and state-of-the-art rail traversers.

SITE WIDE INFRASTRUCTURE WORKS

Winvic has delivered ground remediation and enabling works on sites of all shapes and sizes, the largest to date being SEGRO Logistics Park East Midlands Gateway at 700 acres. We move millions of cubic metres of material, shape the land and shift levels to accommodate a variety of vertical build, highways and rail projects.

Under the banner of site-wide infrastructure works, we also undertake ecology, archaeology and geotechnical site investigations and improvements as well as significant landscaping schemes to create acres of park and woodland. Underground utilities and drainage investigations, diversions and new installations are also essential services we offer in supporting ongoing site development.

Key Winvic projects:

- ▼ SEGRO Logistics Park East Midlands Gateway
- ▼ SEGRO Logistics Park Northampton
- ▼ Mercia Park, Leicestershire
- ▼ Prologis Park Hams Hall





Featured: SEGRO Logistics Park East Midlands Gateway 2018



Featured: SEGRO Logistics Park Northampton



Featured: Appleby Lodge, Prologis Park, Wellingborough

RAIL

Winvic is leading the way in the construction of Strategic Rail Freight Interchanges (SRFI) in the UK, which are increasingly being viewed as an environmentally conscious solution in removing HGVs from the roads. With a proven track record in delivering quality rail projects, we have been awarded the Railway Industry Supplier Qualification Scheme (RISQS).

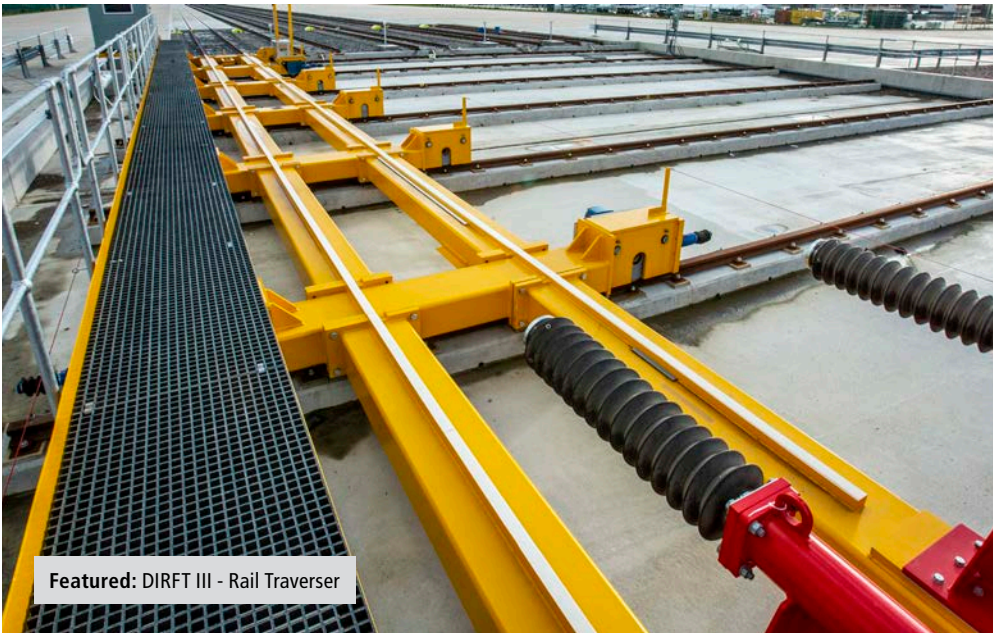
We are specialists in the design and pouring of specialist reinforced concrete mixes, carefully calculated to withstand the weight of freight containers and the rigour of vehicles that move them around the terminal. Alongside the construction of the terminal slab, we install the sidings, state-of-the-art rail traversers and tracks – whether overbridge or underbridge – to connect with the local mainline as well as other crucial infrastructure elements, such as balancing ponds, gabion walls and drainage.

Key Winvic projects:

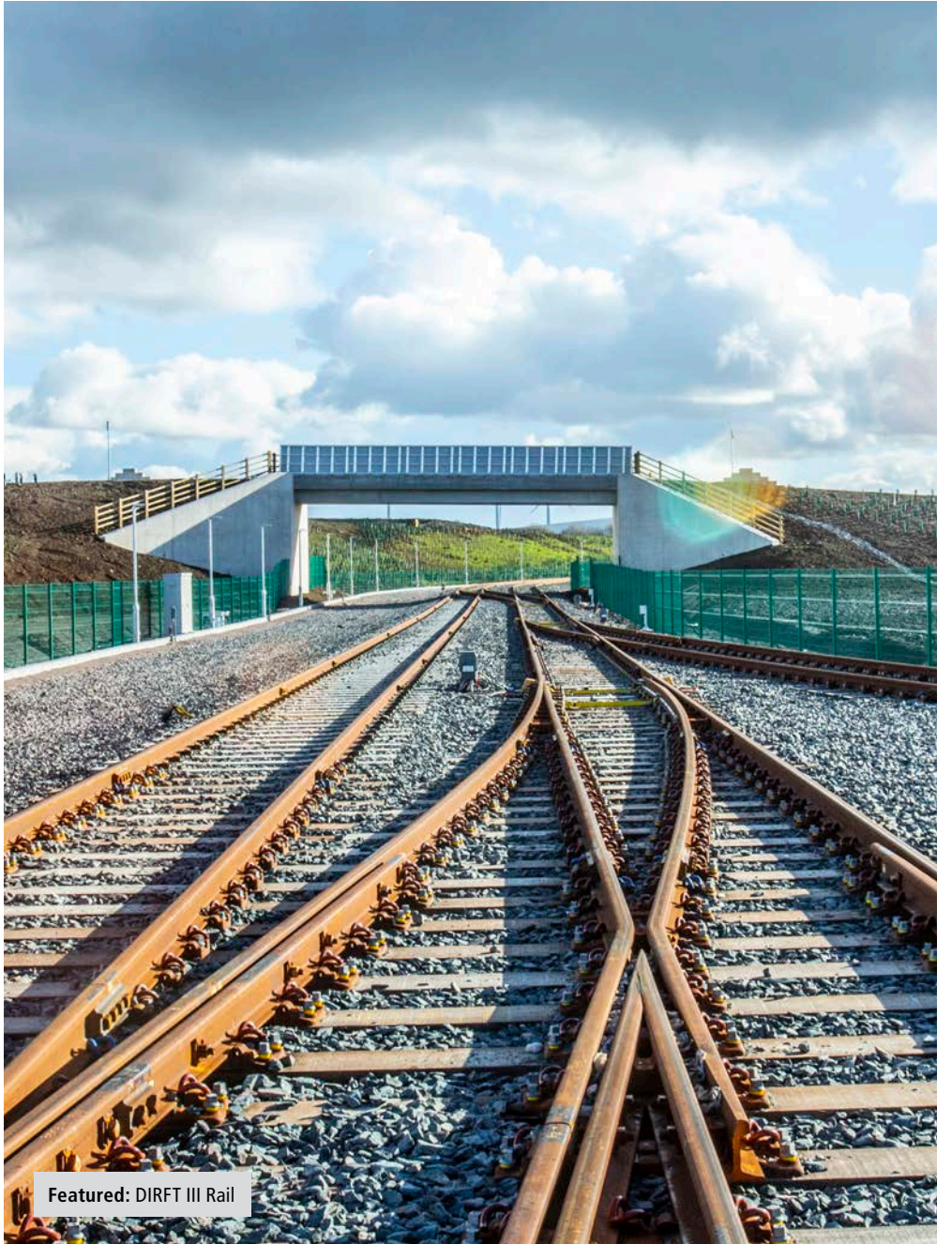
- ▶ SEGRO Logistics Park East Midlands Gateway SRFI
- ▶ DIRFT III Rail (Intermodal Rail Freight Terminal)
- ▶ SEGRO Logistics Park Northampton SRFI
- ▶ West Midlands Interchange SRFI



Featured: SEGRO Logistics Park Northampton SRFI



Featured: DIRFT III - Rail Traverser



Featured: DIRFT III Rail

HIGHWAYS

Whether a stand-alone requirement, or part of a Section agreement ascribed to a development, Winvic is experienced in the construction of private roads, trunk roads, motorway junctions and roundabouts.

We undertake works on and offline, under traffic management and road closures. Our services also comprise the installation and migration of services, traffic signals, lighting and pedestrian footways as well as other public realm features, such as street furniture and sculptures.

We ensure workforce and driver safety is at the forefront of any project. Minimising disruption to road users and communication with stakeholders and communities is always a priority.

Key Winvic projects:

- ▶ A16 Marsh Lane Roundabout, Boston
- ▶ A5 Hinckley Roundabout
- ▶ SEGRO Logistics Park East Midlands Gateway
- ▶ SEGRO Logistics Park Northampton
- ▶ J16 M1 Panattoni Park Northampton





Featured: SEGRO Logistics Park Northampton



Featured: SEGRO Logistics Park East Midlands Gateway



Featured: Fairham Infrastructure

STRUCTURES

Through our highly skilled teams, innovative and value- engineering solutions, Winvic continues to deliver quality structures across the UK.

Winvic has been heavily involved in the design process, installation and complex stakeholder management for numerous structures. This includes a National Highways network first – a 45 degree skew bridge carrying traffic over the newly constructed M1 Southbound off-slip road. Whether they cross rivers, roads or rail, or are fabricated off site, constructed onsite or poured in-situ, we have the expertise to plan and programme the safe and successful construction of many different types of bridges and covered tunnels.

Key Winvic projects:

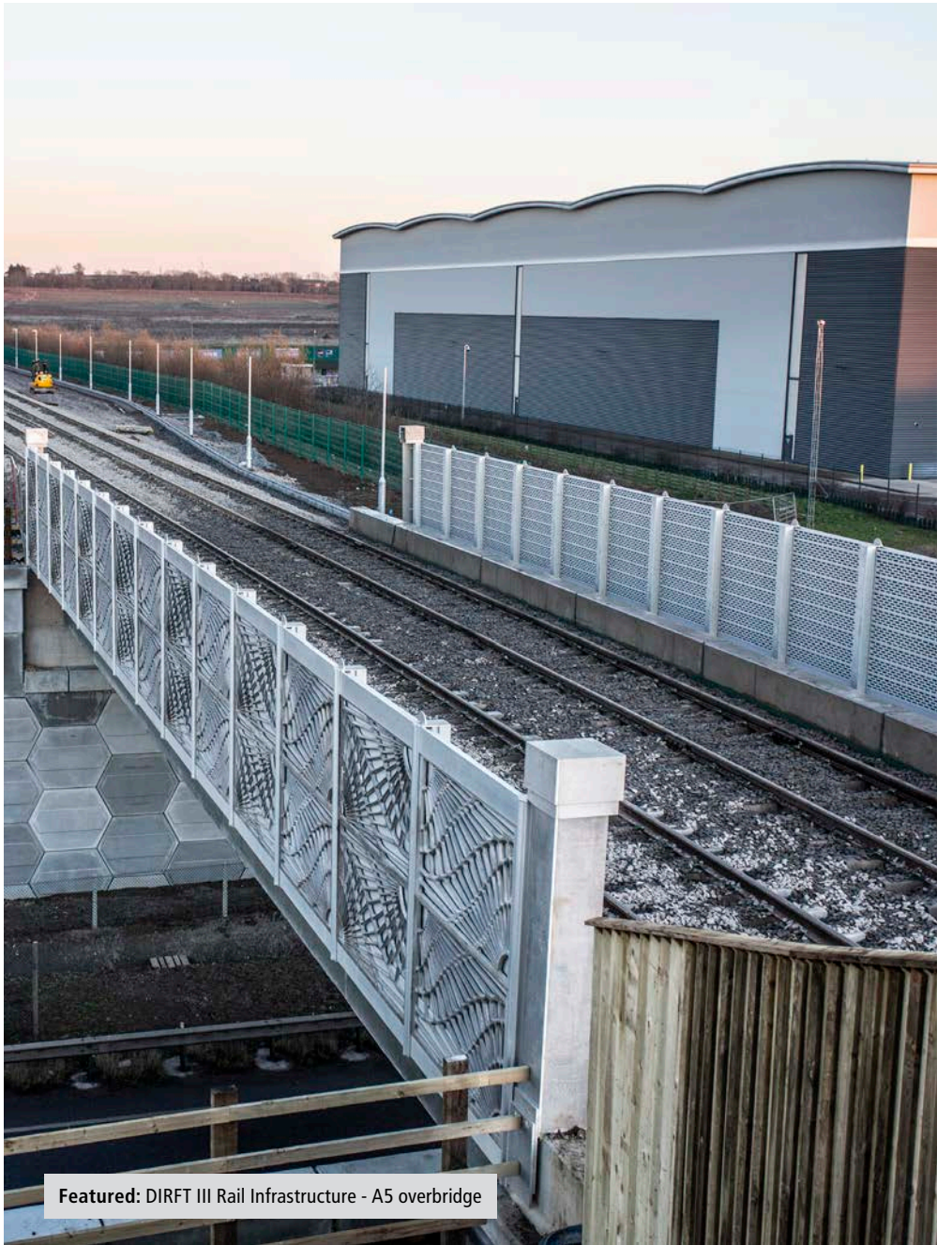
- ▼ DIRFT III Rail Infrastructure
- ▼ SEGRO Logistics Park East Midlands Gateway
- ▼ Peddimore S278 and Infrastructure
- ▼ SEGRO Logistics Park Northampton
- ▼ Gateway 45 Leeds



Featured: Gateway 45 Leeds



Featured: DIRFT III Rail Infrastructure - A5 overbridge



Featured: DIRFT III Rail Infrastructure - A5 overbridge

I FRAMEWORKS

With a long history of delivering civils and infrastructure works to facilitate vertical build developments and an increase in contract wins for large-scale, stand-alone schemes, Winvic is in a prime position to secure places on public sector frameworks. We deliver projects for infrastructure owners and operators including National Highways, government agencies and local authorities under long-term contracts to construct new assets, undertake improvement works and action repairs.

This includes works on roads and structures in areas up and down the UK and comprise waterproofing, expansion joints and concrete repairs on structures, as scheduled schemes or those requiring emergency action.

We are currently looking for other civils and infrastructure framework opportunities across the UK.

Current Frameworks:

- ▼ National Highways Scheme Delivery Framework
- ▼ Lincolnshire County Council Framework
- ▼ Warwickshire County Council Framework
- ▼ Procure Partnerships Framework
- ▼ PAGABO



 M62 Ouse Bridge -
Scheme Delivery Framework



Featured: A16 Marsh Lane Boston (LCC)



Featured: Newland PRN & Traffic Signal Junction Improvement (LCC)

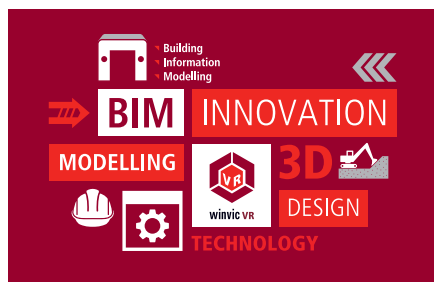


Featured: M62 Ouse Bridge (National Highways)

INVESTING IN THE FUTURE

Winvic has a passion for innovation and efficiency across processes, materials and operations and is committed to questioning and challenging the norm, whether that's value engineering an alternative delivery mechanism, a more effective material or a solution to reduce resources.

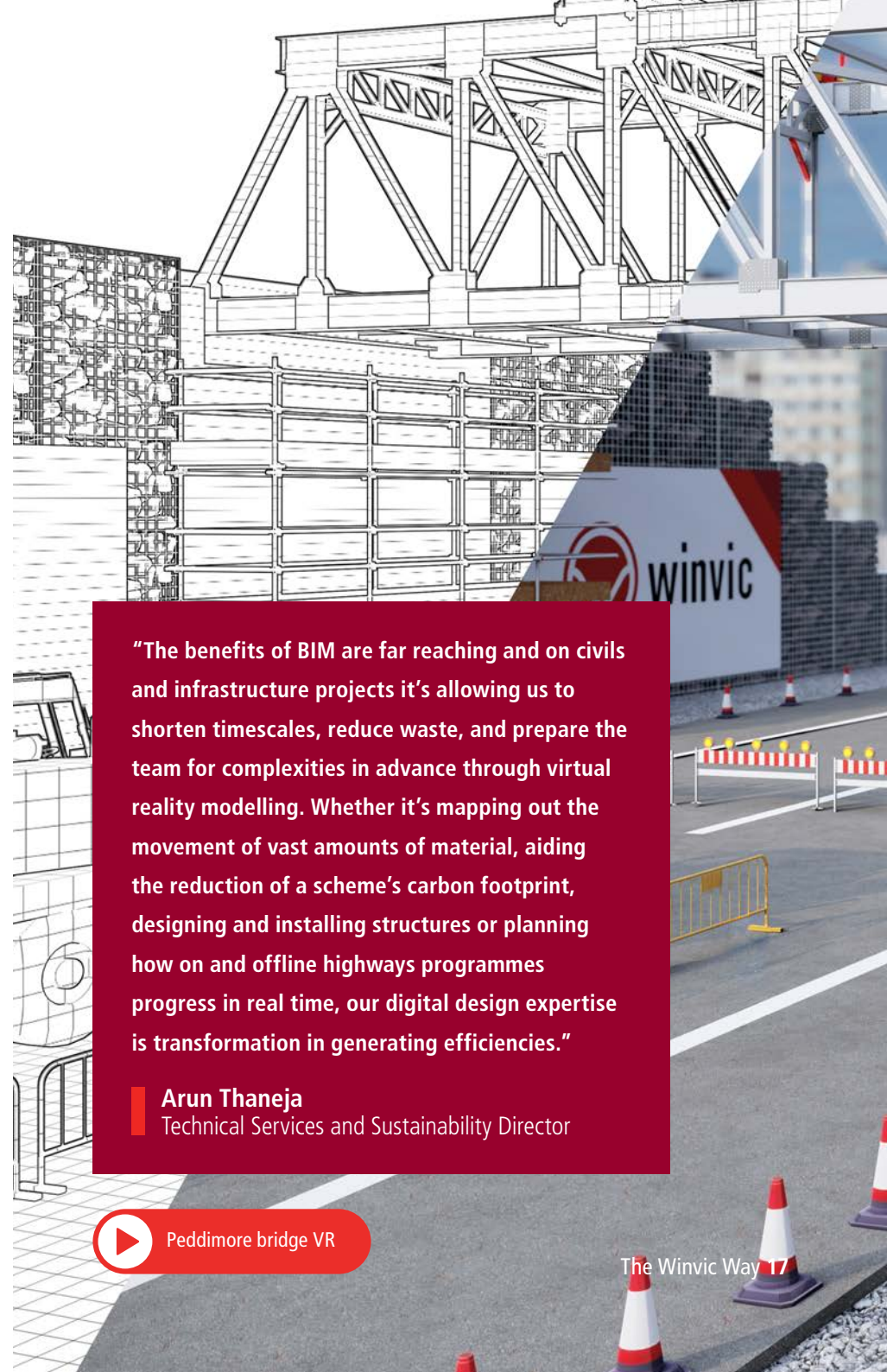
However, we have also **invested in state-of-the-art virtual reality (VR)** facilities and a dedicated Technical Services team, who are experts in **Building Information Modelling (BIM)**. We know digital design helps our clients visualise large-scale civils and infrastructure schemes better, make faster decisions on timings and designs, and appreciate exactly what progress will look like at any stage in the programme.



We can model digital designs in 3D BIM and delivery programmes using 4D BIM. Examples where 4D BIM is beneficial includes the delivery of highways construction or improvement works where the integration of

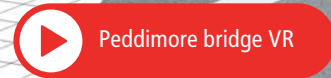
live and off-line works can be planned safely. Design clashes can be detected more quickly, and more challenges overcome in advance using a digital model. This means the project can be started and executed more efficiently within a shorter timescale.

At Peddimore, we erected a new pedestrian bridge over the A38 and its design and installation were planned using BIM. The 60-metre steel tied arch footbridge was manufactured off site and assembled in an off-line area before being installed over a 47-hour period where the road was closed. Thanks to the structure and its installation programme being designed with BIM, our team completed the works ahead of schedule and we were able to open the road 12 hours earlier than expected. With BIM we're helping to complete projects faster, shape more accurate budgets earlier, better understand the impact to customers or communities and significantly reduce health and safety risks.



“The benefits of BIM are far reaching and on civils and infrastructure projects it's allowing us to shorten timescales, reduce waste, and prepare the team for complexities in advance through virtual reality modelling. Whether it's mapping out the movement of vast amounts of material, aiding the reduction of a scheme's carbon footprint, designing and installing structures or planning how on and offline highways programmes progress in real time, our digital design expertise is transformation in generating efficiencies.”

Arun Thaneja
Technical Services and Sustainability Director



CREATING A SUSTAINABLE FUTURE

Winvic is a Net Zero Carbon champion and sets itself apart from most of its competitors by measuring the carbon output for the whole project including all earthworks and groundworks. With experience of including all civils and infrastructure works in our carbon measurements, we're equipped and ready to deliver Net Zero Carbon civils and infrastructure projects, such as SEGRO Logistics Park Northampton.



We have a reputation for impeccable processes and delivery of schemes that are in line with the UKGBC Framework, realising our client's sustainability aims through five areas:

- ▶ **Measurement** – we use One Click LCA carbon footprint assessment software to measure the output alongside our own Carbon Calculator – AI System for Predicting Embodied Carbon in Construction (ASPEC) – which is in development through an Innovate UK funded project.
- ▶ **Research** – we have a continuous research programme where we aim to uncover like-for-like materials that have less intensive carbon footprints.
- ▶ **Buying local** – sourcing materials that originate from places local to the particular project as well as engaging local labour is a key activity, for example obtaining stone from local quarries.
- ▶ **Green Supply Chain** – our green suppliers list is continually expanding, especially within project areas that are carbon intensive.
- ▶ **Offsetting** – any remaining carbon output on a project is offset against Gold or VCS standard schemes, focusing on a split across ecology, social value and renewables, including like-for-like tree planting in the UK to overseas. Whenever possible, we avoid the recent trend of utilising overseas carbon offsetting schemes and our pledge to delivering Net Zero projects comprises a duty to local legacy initiatives.

SUPPORTING COMMUNITIES THROUGH CONSTRUCTION

Working in partnership with our clients, local authorities, education and training providers and our supply chain, Winvic strives to leave a positive legacy in the communities that surround its projects. We build relationships, seek opportunities, identify groups in need of support and create tailored plans and working groups that facilitate action.

These comprise new job opportunities, construction training leading to employment, educational and work experience placements, qualification pathways and site visits to showcase career opportunities to young people. Appointing local subcontractors to bolster the area's economy, engaging social enterprises, and donating resources and materials to local projects are all other elements of social value schemes that we deliver.

We've renovated a school's playground, created over 60 'Dignity Bags' for young people living in supported housing schemes at Christmas, and created 2,030 training and employment weeks over a 10-month period as part of our commitment at the Peddimore project. At Mercia Park, 680 weeks of on and off-site training has been delivered, we opened our first dedicated on-site training facility and have achieved 45% spend with SMEs in the Impact Area. These are just a few examples of how we're making a real difference to people's lives.



"It's in Winvic's DNA to leave a positive legacy in the communities in which it works, and we've created and executed many tailored social value strategies in partnership with clients to help them meet their goals. Pair our experience, commitment and knowledge with our great relationships with skills and education providers, local authorities and suppliers, and the result is the creation of positive, long-lasting benefits. We don't just deliver construction and infrastructure schemes, we bring a wide range of benefits to individuals, businesses and communities and make a difference to real people's lives."

Heidi Salmons
Head of Marketing, Communications and Social Responsibility

I DOING IT RIGHT

Winvic is committed to continual improvements to ensure ongoing excellence alongside our core values. We hold ourselves to account against our own high standards from taking pride in the presentation of our sites and offices, to our outstanding safety reduction figures. It is our ambition to reset the bar of standards across the entire business. Building on the solid platform of the past, to ensure a sustainable, safe and successful future.

Our safety observations app showcases good practice whilst giving our supply chain a voice on our sites. Our app allows bad practices to be monitored and rectified, quickly and efficiently by our site teams. We use data analysis to identify the trends and patterns across our business to drive our quarterly focus topics for continual improvement.

The initiative includes both an online and site-specific induction, a set of minimum safety standards for our supply chain to hold themselves to account and a reward and recognition scheme for both our supply chain and Winvic site teams.



3 PILLARS OF EXCELLENCE

-  **Minimum standards**
-  **Motivation**
-  **Measurement of outcomes**

I OUR AIMS



QUALITY

- ▶ To embed the Doing It Right culture as part of The Winvic way. It is a process, not an event. It is part of everyday practice and the expectations set by Winvic.
- ▶ To create 100% consistency in the quality of our sites set-up and presentation.




SAFETY

- ▶ Continue to reduce our already outstanding accident frequency rate (AFR) and our minor injuries rate. Since the launch of Doing It Right, we have seen a 64% reduction of our AFR.
- ▶ To encourage safety to be a shared responsibility by everyone on our sites.
- ▶ Continual improvement of safety behaviour standards across the business.



WELLBEING

- ▶ Continue to raise awareness of all aspects of wellbeing, including financial, physical and mental health.

 [Watch our Doing It Right video here](#)

I FUNDS - CLIENTS - CONSULTANTS



AWARDS AND ACCREDITATIONS



COMPANY STRUCTURE

GROUP BOARD



CONSTRUCTION BOARD



CIVILS AND INFRASTRUCTURE SENIOR LEADERSHIP TEAM



CIVILS AND INFRASTRUCTURE

CIVILS AND INFRASTRUCTURE BROCHURE

Winvic Construction Ltd.

Brampton House
19 Tenter Road
Moulton Park
Northampton
NN3 6PZ

To discuss an upcoming project, please get in touch with our Business Development team:

justinfitzgerald@winvic.co.uk